



janus

THE
NEWSLETTER
OF THE
NORTH CAROLINA
FOSSIL
CLUB

NUMBER 33

February 1989

TRIP POLICIES - SPRING SCHEDULE

We will meet at each trip site at 9:00 a.m. on the date scheduled. Transportation is not provided but car pooling can be arranged. (Use your membership list to locate others in your area who might want to share a ride.) Sturdy shoes or boots are recommended, and hardhats will be required - Texasgulf will provide hardhats if you don't have your own, but you must bring your own to the Castle Hayne quarry.

Texasgulf has a few rules of their own. No one under the age of 18 will be permitted into the TG mine. Everyone must wear a hardhat and everyone will have to sign a waver for accident liability. Also, fossil hunters are not to get any closer than three rows (hills) away from the cranes or other equipment, and are not to climb on the walls of the pit (due to danger of collapse or cave-ins). We are obliged to obey these and any other rules which may be communicated to us at the site, both for our own safety and for the continuation of visiting privileges. Any NCFC member identified breaking these rules will be warned once and on the second offense shall be barred from future trips.

Texasgulf has imposed a limit of 50 people per trip; for this reason NCFC members must make reservations to get into TG. Also, one trip per season. The first 50 people to call the designated officer to sign up will have a reservation. Anyone making a reservation and not showing up without cancelling at least two days before the trip will forfeit an opportunity to reserve a spot on the next trip. Guests are not allowed on the TG trips but are welcome at other sites. The 50 people on the Spring trip are ineligible for the Fall trip.

The following trips have been confirmed for the Spring season:

Sat., February 18

Arapahoe, New Bern, NC
Trip Leader Thelma Bennet
919 249-1574

Sat., February 25

Martin Marietta, New Bern, NC
Trip Leaders Frank & Becky Hyne
919 752-3284

Sat., March 4

Duke Primate Center & Fossil Laboratory
Read enclosed artical for details

NCFC President, Vince Schneider; Secretary, Georgenne Webster; Treasurer, Patricia Kohler; Board of Directors: Michael Allen, Pam Burns, Tom Burns, John Everette, Becky Hyne, Jim Knowles, Judy Schneider, Georgenne Webster.

Sat. March 18 Texasgulf, Aurora, NC
 Trip Leader Vince Schneider
 Call Vince or Judy Schneider starting March 4
 919 779-9338

Sat., March 25 Arapahoe, New Bern, NC
 Trip Leader Thelma Bennet
 919 752-1574

Sat. April 8 Martin Marietta, Belgrade Quarry, Jacksonville NC
 Trip Leader Richard Tellekamp
 919 347-6361

Sat. April 22 Martin Marietta, Castle Haynes NC
 Trip Leader Vince Schneider
 Call Vince or Judy
 919 779-9338

Sat. May 6 Wades Bay, Maryland
 Trip Leader Bob Wiest
 301 864-4677

 TREASURER'S REPORT - ANNUAL MEETING

Balance Brought Forward October 24, 1987 \$1153.30

Income

Dues 2125.00
 Books 12.00
 T-Shirts 215.00

\$2352.00
\$3505.30

Total

Expenses

Meetings (Annual meeting) 163.36
 Miscellaneous (Xeroxing, Supplies) 74.40
 Printing (Janus, membership list) 469.32
 Stamps and Postage 253.86
 Telephone Calls 249.97
 T-Shirts and Books 416.75
 Membership Reimbursements 45.00
 Grants and Funds 550.00
 Bank Service Charges 71.45

Total

\$2294.11
\$1211.19

Balance on Hand November 5, 1988

MEMBERSHIP REPORT - ANNUAL MEETING

Membership as of October 24, 1987

148 listings
 205 individual members

Membership as of November 5, 1988

148 listings
 206 individual members

Trish Kohler
 Treasurer/Membership

DUKE PRIMATE CENTER & FOSSIL LABORATORY

Saturday, 4 March 1989, 10:00 AM - 12:00 PM +

Limit: 30 people in 2 groups of 15

Call Vince or Judy Schneider between Sat. 3/18 & Wednes. 3/24
for reservations . (919) 779-9338

Cost: \$7.50/person, down from their usual \$10 fee. It is a tax deductible contribution which goes to feed the animals.

The Center is a "living library" devoted to the conservation and study of prosimian primates. The colony represents 75% of all the species in captivity (20+), with over 600 lemurs, bushbabies, etc. They are dramatically beautiful and very much at home in the N.C. woods.

They are generally not subjected to the stress of public display, but scientific groups can gain access. Very few, however, ever see the extensive fossil collections and on-going laboratory research. All of this will be opened to the N.C. Fossil Club.

For over 20 years the team has dug in the Egyptian Fayum (Sahara Desert) for Oligocene primate remains. In addition to those rare finds (approx. 2 per 1,000 fossils) they have brought back plants, fish, reptiles, birds, bats, marsupials, creodonts, rodents and others.

The Director, Dr. Elwyn Simons, will speak to us about the Center and their 1966 discovery of one of the earliest known hominoids, Aegyptopithecus zeuxis. They have continued to make additional fascinating finds and publish on these "dawn ape" skulls.

The Curator, P.J. Chatrath, and his graduate students will show us their collection, displays and lab work in progress. They just returned from Egypt in December so they are still unpacking their many new specimens...a process we are all familiar with.

They have prepared a slide show of the actual dig, knowing that our group can empathize with less than ideal field conditions. The Fayum makes a hot day at Texas Gulf seem a veritable picnic: the nearest water faucet is 35 miles across the desert and the nearest food source is 70 miles away!

Despite the relatively short notice, I hope our members can take advantage of this little known fossil resource in our own state. If there is continued interest, we can return to view their Miocene collections from cave digs in Madagascar. The fossils are quite beautiful - many are completely covered with crystals.

We will rendezvous at Darryl's Restaurant on Route 15/501 Business between Durham and Chapel Hill at the intersection of Garrett Road. We will gather at 9:15 AM and leave by 9:30 AM. You cannot find the Primate Center on your own: it is completely unmarked in the middle of Duke Forest. Please arrange your travel plans to meet us on time.

Directions via 85: Take Exit #175 (15/501 Bypass toward Chapel Hill). After approx. 2 miles, this will curve to the right onto 15/501 Business. Travel .8 miles to the first stoplight. That is Garrett Road. Darryl's is on your left.

Directions via 40: Take Exit "Chapel Hill, 15/501 Business". Turn toward Durham. Travel 1.4 miles to the second stoplight. That is Garrett Road. Darryl's is on your right. (N.B. Coming from Raleigh, stay left on Route 40; do not take the Durham Freeway.)

Alison Chambers

NCFC NEWS

Our new President Vince Schneider and his wife Judy will be taking over the JANUS. If you have any news articles or trip information please call or write the Schenider's at 1208 Northview Street, Garner NC 27529, Phone 919 779-9338.

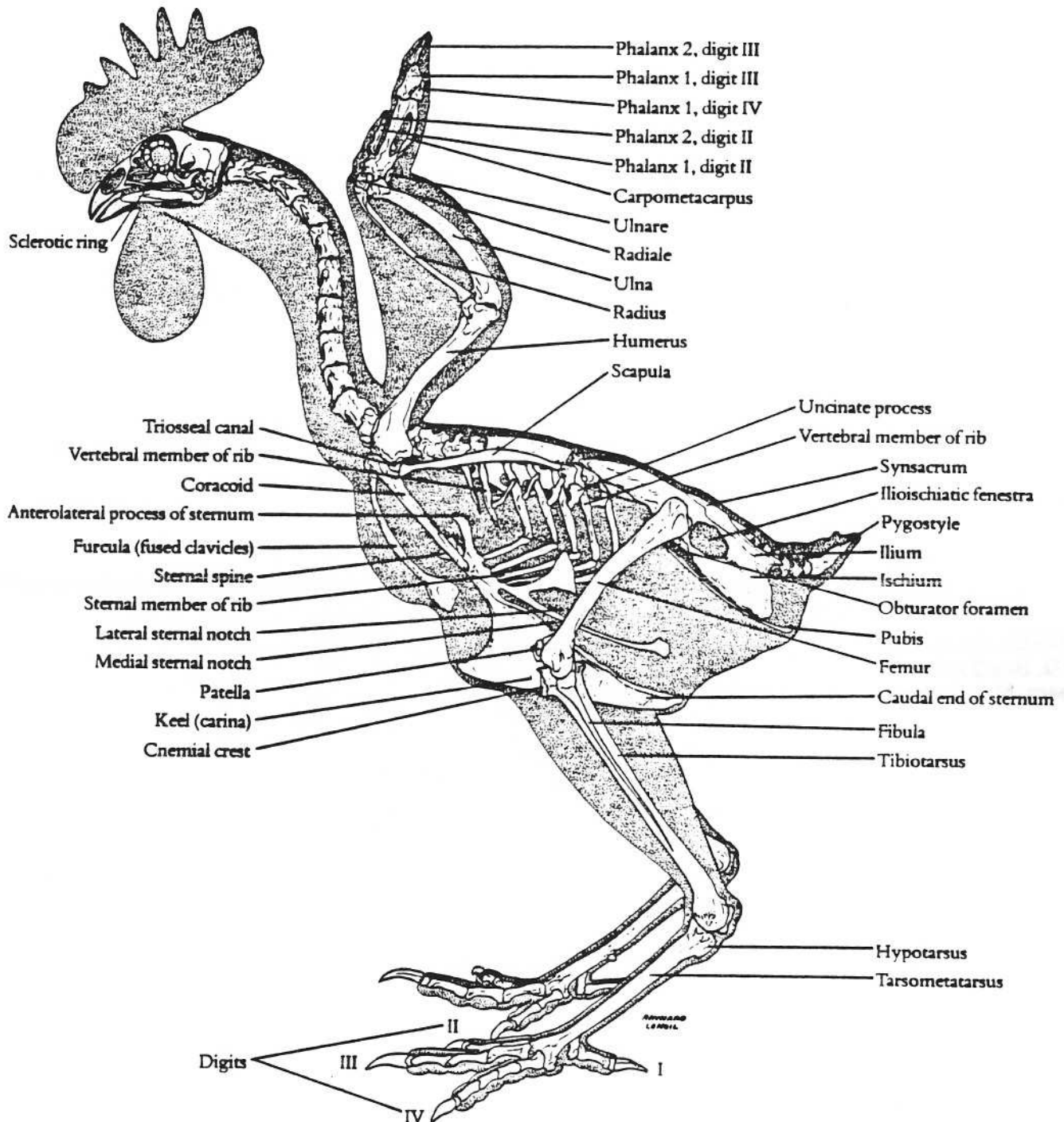
Recently Dr. Walter Wheeler donated \$80.00 to the NCFC. Dr. Wheeler has been a club member for a number of years. His continued support and generosity are always appreciated. Thank you Dr. Wheeler.

Al Robb and Carolyn Zimmerman sent the club letters of thanks for the grant money they recieved from us. Both of these students are studying in the feild of Paleontology and said the funds will help them very much with their expenses.

For the past two years Pam and I have enjoyed putting out the JANUS. We have talked to and met so many interesting people who have helped with the JANUS and different fossil sites for all club members to enjoy. To these people we say thanks. The club has continued to grow and we have grown with it. See you all this Spring.

Tom Burns

THE FEATHERED REPTILE



The skeleton of the domestic chicken, showing the major features of avian anatomy. (Adapted from Lucas and Stettenheim, 1972; courtesy of Alfred M. Lucas.)