



## Spring Calendar

**Upcoming Outreach and Trips:** Trips are pending, watch your inbox for details.

### March

- 21 NCFC Meeting- via Zoom at 1:30 pm. Dr. Robert (Bobby) W. Boessenecker will share some of his latest research related to the Oligocene fauna found at Belgrade. Pre-registration required; watch for a notice.

### May

- 16 NCFC Meeting- via Zoom at 1:30 pm. Dr. Calhoun Bond from Greensboro College will present "The Oldest Bird". Preregistration required; watch for a notice.

## **President's Message**

Greetings Fellow Fossil-philes! It's becoming increasingly challenging to be effective with the uncertain and uneven progress against the COVID-19 pandemic. Some are optimistic and predict we will be able to participate in large gatherings in the Fall. Others still predict large gatherings (such as our annual Fossil Fair) may not be permitted until 2022. As a consequence, the club is faced with a dilemma that has consumed my thoughts. Do we ask someone to plan a Fossil Fair for November 2021, understanding that it may not happen or do we reluctantly agree that it is more prudent to wait until 2022? So now, I am extremely interested in the thoughts of the membership. So, please, drop me an email at [rekrailler@ncfossilclub.org](mailto:rekrailler@ncfossilclub.org) and let me know if you would be willing to display, volunteer or, most importantly, serve as Fossil Fair Coordinator in the current uncertain environment. We would try to find a place for the event local to anyone who is willing to take on the leadership role. And the response we receive will greatly inform our thinking about how to approach this for 2021.

Also, members, please tell us what you have been doing to keep connected to your fossil joy over the past year. Have you gone out and scouted new sites? Have you stood in the flowing (or meandering!) waters of Green's Mill Run? Have you traveled out of state to hunt? Have you scoured the beach? Have you had Zoom chats with friends to discuss finds? Please write up a few sentences to publish in the next Janus. For example, I have sorted through several gallons of Aurora reject matrix, joyfully finding my fill of whale shark teeth (that was the excuse for the activity!) and a beautiful little dog shark (*Squalus cf acanthias* according to [elasmoco.com](http://elasmoco.com)) tooth. There are so many small teeth that I cannot identify (those dang carcharhinids!). I visited GMR several times – without good finds but a socially distanced day in the creek was a good distraction. I snuck away out west with my brother to hunt the Eocene Green River Formation for a week. I have spent countless hours preparing, identifying and curating specimens. Oddly, one of the satisfying things we did was to take advantage of the enforced isolation to renovate a space between the garage and the kitchen to create a good space for preparing fossils. Now there really is no excuse to have boxes of unprepped fossils around. So, even in the absence of organized trips, there have been opportunities to indulge my fossil-mania. How have you indulged yours? Let us know and you may inspire your fellow club members! Stay safe, stay well.

Ramona Krailler  
President, NC Fossil Club

## **North Carolina Fossil Club Year End Treasurers Report For Year Ending December 31, 2020**

Balance Brought Forward: December 31, 2019  
\$22,629.55

### INCOME

Donations	\$ -0-
Dues	4112.52
Neogene Fossil Books (50)	326.00
Cretaceous Fossil Books (49)	309.00

*continued next page*

INCOME *continued*

Seal / Dolphin Books (4)	39.00
Calendars (105)	968.00
Volume I Books (8)	462.00
Volume I CD's (3) Free CD's (7)	37.00
Volume 2 Books (12)	668.00
Volume 2 CD's (3) Free CD's (9)	37.00
Volume 3 Books (18)	1338.00
Volume 3 CD's (6) Free CD's (7)	74.00
Volume 4A Books (12)	545.00
Volume 4A CD's (7) Free CD's (4)	91.00
Volume 4B Books (16)	765.00
Volume 4B CD's (6) Free CD's (9)	74.00
	\$ 9845.52
PayPal Fee	(104.90)
	\$ 9740.62

EXPENSES

Club Meetings, Picnics, Speakers	\$265.40
Miscellaneous, PO Box, Web Hosting	178.00
Membership Brochures	192.45
Stamps & Postage	490.22
SFMS Dues & Insurance	962.50
NC Dept. of Revenue (Sales Tax)	288.80
Gift Cards Quarry Managers	136.03
Fossil Fair Expenses	-0-
Donations / Grants	1000.00
Volume 2 Printing Expenses	1368.50
Volume 3 Printing Expenses	1623.25
Volume 4A Printing Expenses	825.00
Calendar Printing Expenses	630.00
	(\$7960.15)

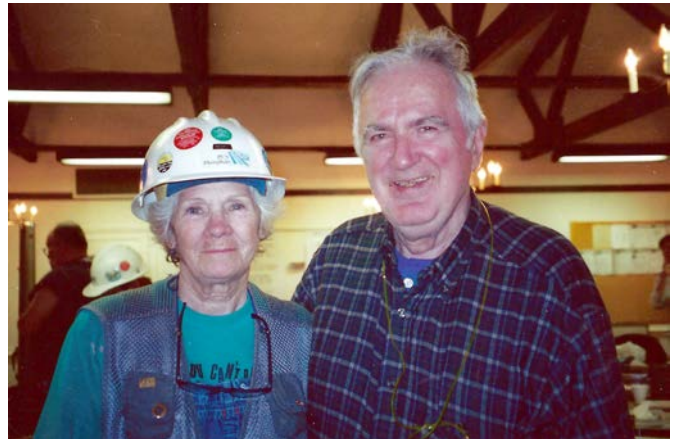
Balance On Hand: December 31, 2020 \$24,410.02

-----

**Gerard Ramon Case**  
**December 22, 1931 - December 21, 2020**



**Jerry at Ramanessin Creek, NJ in 1965**  
 photo provided by Earl Manning



**Jerry with Becky Hyne**  
 photo provided by Joy Herrington

The following obituary can be found here:  
<https://www.sebrellfuneralhome.com/obituaries/Gerard-R-Case?obId=19395460#/obituaryInfo>

On Monday, 21 December 2020, on the eve of his 89th birthday, Gerard R. Case, of Brooklyn, New York (originally), passed away with the peace and grace befitting any good servant of God in the sanctuary of his final home in Jackson, Mississippi. Gerard, who always went by “Jerry,” was born 22 December 1931, in the Flatbush section of Brooklyn, but spent most of his life on the opposite side of the Hudson in Ridgefield Park, New Jersey. In every sense, he was a ‘Brooklyn Boy’—frequenting Ebbets Field and rooting for “The Bums” (Brooklyn Dodgers) with his playmates.

Jerry attended high school at Brooklyn’s School of Industrial Arts, to which he was promoted from public school because of his promise as an artist—illustrator. This was followed by night school at the Mechanics Institute in New York. Jerry served in the US Navy during the Korean War (1951-1955) aboard the net-layer USS Tunxis AN90. Proud of his service

to God and country, he coauthored a book—Operation Borneo—about those soldiers who came before him in the last battle of World War II. After the war, Jerry enrolled as an art student at Pratt Institute in Brooklyn on the ‘GI Bill of Rights’ but left academics, just 12 hours shy of graduating, to care for his dying father.

At the outset of his career, Jerry was an aspiring cartoonist, working briefly for Paramount as an animator, bringing to life characters like Betty Boop, Popeye, and Casper the Friendly Ghost. Through his brother Warren, he became a close, lifelong friend of noted cartoonist-animator Clifford Augustson (Terry Toons, Hanna Barbera). By profession, Jerry was a commercial artist and draftsman with several advertising agencies and art studios; his resume includes time under New York abstract artist Meyer Tannenbaum. To make ends meet, Jerry worked many years for his best friend Paul Borodin in the commercial cooling industry and was last employed with the Bergen County Dept of Public Works & Engineering in Hackensack, New Jersey.

*continued next page*

Jerry had many hobbies and passions (all related to historical studies), but the greatest of them all, for which he was most passionate, was paleontology. Although he had no formal training in the sciences, and never completed his academic training, the study of fossils was nonetheless his true calling.

Jerry had an illustrious and prolific career in paleontology, having named 180 fossil genera and species in well over a hundred publications to his credit. His scientific discoveries were numerous and produced hundreds of publications beyond his personal authorship. As tribute to his discoveries, he has had at least a dozen species named in his honor and one genus. He had research and field associate affiliations with the American Museum of Natural History (AMNH), the Field Museum of Natural History (FMNH), the Princeton Museum of Natural History, the University of Michigan Museum of Paleontology (UMMP), and, most recently, the Mississippi Museum of Natural Science in the state capital. His close friends and colleagues in vertebrate paleontological circles included Don Baird (Princeton), David Dunkle (Cleveland Museum of Natural History), Lev Nessov (Saint Petersburg University), Rainer Zangerl (FMNH), Bob Schaeffer (AMNH), Alexander Averianov (Academy of Science, Saint Petersburg), and prominent Soviet palaeoichthyologist Leonid Glikman. In 1992, Jerry received

the highest honor for an avocational paleontologist—the Paleontological Society’s Harrel L. Strimple Award.

Although never professionally employed as a vertebrate paleontologist, Jerry’s contributions to the field are enviable for a professional, let alone an ‘amateur.’ To that end, in August of this year, Jerry received a lifetime achievement award from his much beloved alma mater—Pratt Institute. This event was followed earlier this month, a week prior to his passing, by Pratt presenting its accomplished alumnus with yet another high honor—a Doctor of Liberal Arts (Honoris Causa)—for his contributions to the arts and sciences.

Paul Borodin of Little River, South Carolina, was his lifelong friend, with whom he collected fossils from the East Coast to the Great Plains. Unfulfilled with his 2010 move from New Jersey to South Carolina, Jerry sought refuge, need, and belonging in Mississippi—a research ‘stomping ground’ in the 1980s and 1990s. There he was welcomed by a community of people that made him happy—almost beyond contentment—until the day he died.



**Jerry at NC Fossil Club quarry trip**  
photo from NC Fossil Club website



**Jerry at the NCFC Fossil Fair 2013**  
photo by Trish Kohler

### New genera and species by Gerard R. Case & Associates

An asterisk (\*) indicates the type species of a genus.

Abdounia [was Negapriion] furimskyi (Case), 1980 (55)

\*Aktaua kizylkumensis Case, Udovichenko, Nessov, Averianov, & Borodin, 1996 (88)

Ankistrorhynchus major Cappetta & Case, 1975a (38)

Ankistrorhynchus washakiensis Case, 1987b (63)

Anomotodon cravenensis Case, 1980 (55)

Anomotodon toddi Case & Cappetta, 1997 (89)

Archaeotriakis ornatus Case, 1987b (63)

\*Archaeotriakis rochelleae Case, 1978b (47)

Borodinopristis ackermani Case, Schwimmer, Borodin & Leggett, 2001 (97)

\*Borodinopristis schwimmeri Case, 1987a (62)

Borodinopristis shannoni Case, Cook, Wilson, & Borodin, 2012 (104)  
 Brachaelurus [now Protoginglymostoma] bighornensis Case, 1987b (63)  
 Brachaelurus hornerstownensis Case, Borodin & Leggett, 2001 (99)  
 Brachycarcharias [was Pseudodontaspis] mississippiensis (Case) 1994a (82)  
 Cantioscyllium clementsi Case, Cook, Kightlinger, and Borodin, 2019 (110)  
 Cantioscyllium hashimiaensis Mustafa, Case, & Zalmout, 2002 (100)  
 Cantioscyllium meyeri Case & Cappetta, 1997 (89)  
 Cappettaia Bernardez, 2002  
 Cappettaia [was Odontaspis] amonensis (Cappetta & Case), 1975b (39)  
 Carcharias [was Odontaspis] borodini (Case), 1994a (82)  
 Carcharias [was Odontaspis] "cheathamii" [to C. holmdelensis] Case, 1987b (63)  
 Carcharias [was Odontaspis] hardingi (Cappetta & Case), 1975a (38)  
 Carcharias [was Odontaspis] holmdelensis (Cappetta & Case), 1975a (38)  
 Carcharias [was Odontaspis] hynei (Case), 1994a (82)

*continued next page*

Carcharias [was *Synodontaspis*] *lilliae* (Case, Tokaryk & Baird), 1990 (72)  
*Carcharias heathi* Case & Cappetta, 1997 (89)  
*Carcharias* [was \*"*Pseudodontaspis*"] *herbsti* (Case), 1987b (63)  
*Carcharias* [was "*Pseudodontaspis*"] *lauderdalensis* (Case), 1994a (82)  
*Carcharias* [was *Odontaspis*] *samhammeri* (Cappetta & Case), 1975a (38)  
*Carcharias* [was *Odontaspis*] *sanguinei* (Case), 1978b (47)  
*Carcharias* [was *Odontaspis*] *steineri* (Case), 1987b (63)  
*Carcharias* [was "*Microdontaspis*"] *tenuis* (Case, Schwimmer, Borodin & Leggett), 2001 (97)  
*Cenocarcharias* Cappetta & Case, 1999 (93)  
*Cenocarcharias* [was *Odontaspis*] *tenuiplicatus* (Cappetta and Case), 1975b (39)  
*Centrophoroides* [now *Squalus*] *worlandensis* Case, 1987b (63)  
*Chiloscyllium missouriense* Case, 1979c (51)  
\**Columbusia fragilis* Case, Schwimmer, Borodin, & Leggett, 2001(97)  
*Columbusia* [was *Squatirhina*] *roessingi* (Case), 1987b (63)  
*Coupagezia turneri* Case & Cappetta, 1997 (89)  
*Cretodus* [was *Protolamna gigantea*] *giganteus* (Case), 2001 (98)  
*Cretolamna appendiculata/arambourgi* Cappetta & Case, 1975a (38)  
*Cretolamna* [was *Lamna*] *twiggensis* (Case), 1981(57)  
\**Cretomanta canadensis* Case, Tokaryk & Baird, 1990 (72)  
*Cretorectolobus* [was *Eucrossorhinus*] *microcuspidatus* (Case), 1978b (47)  
\**Cretorectolobus olsoni* Case, 1978b (47)  
\**Dallasiella willistoni* Cappetta & Case, 1999 (93)  
*Dasyatis borodini* Case, 1981 (57)  
[*Dasyatis carolinensis* Case & Borodin, in press (106)]  
*Dasyatis charlissae* Case, 1981 (57)  
*Dasyatis commercensis* Case & Cappetta, 1997 (89)  
*Dasyatis crosswickensis* Case, 1996 (87)  
*Dasyatis newegyptensis* Case, Borodin & Leggett, 2001 (99)  
\**Enatiobatis tarrantensis* Cappetta & Case, 1999 (93)  
\**Eorhinoptera grabdai* Case, Cook, & Wilson, 2011 (103)  
*Erguitaia* [now *Ptychotrygon*] *benningensis* Case, Schwimmer, Borodin, & Leggett, 2001(97)  
*Eucrossorhinus* [now *Cretorectolobus*] *microcuspidatus* Case, 1978b (47)  
\**Ewingia* [now *Tomewingia* - see #105] *problematica* Case & Cappetta, 1997 (89)  
*Galeorhinus* [now *Physogaleus*] *huberensis* Case, 1981b (57)  
*Ganopristis jordanicus* Mustafa, Case, & Zalmout, 2002 (100)  
*Ganopristis karakensis* Mustafa, Case, & Zalmout, 2002 (100)  
*Ginglymostoma cuspidata* Case, Borodin & Leggett, 2001 (99)  
*Ginglymostoma* [now *Plicatoscyllium*] *globidens* Cappetta & Case, 1975a (38)  
\**Glikmania tamdyensis* Case, Udovichenko, Nesson, Averianov, & Borodin, 1996 (88)  
*Gomphogaleus* [was *Mustelus*] *rogersi* (Case), 1994a (82)  
*Hamrabortis weltoni* Case & Cappetta, 1997 (89)  
*Heterodontus janefirdae* Case, 1980 (55)  
*Heterodontus creamridgensis* Case, Borodin & Leggett, 2001 (99)  
*Heterodontus elongatus* Case & Borodin, 2000 (95)  
*Heterodontus granti* Case & Cappetta, 1997 (89)  
*Heterodontus pineti* Case, 1981b (57)  
*Heterodontus sowasheense* Case, 1994a (82)  
*Hybodus montanensis* Case, 1978b (47)  
*Hybodus novojerseyensis* Case & Cappetta, 2004 (101)  
*Hybodus rajkovichii* Case, 2001 (98)  
[*Hybodus rugosus* Case & Borodin, in press (106)]  
*Hybodus* [now *Paraorthacodus*] *storeri* Case, 1978b (47)  
*Hybodus wyomingensis* Case, 1987b (63)  
*Hypotodus* [now *Odontaspis*] *aculeatus* Cappetta & Case, 1975a (38)  
*Hypotodus* [now *Odontaspis*] *grandis* Case, 1978b (47)  
*Hypolophites hutchensi* Case, 1996 (87)  
*Hypolophodon* [was *Platyrrhina*] *dockeryi* (Case), 1994a (82)  
\**Hypsidoris farsonensis* Lundberg & Case, 1970 (17)  
\**Iniopera richardsoni* Zangerl & Case, 1973 (32)  
\**Iniopteryx rushloui* Zangerl & Case, 1973 (32)  
*Iniopteryx tedwhitei* Zangerl & Case, 1973 (32)  
\**Inioxyle whitei* Zangerl & Case, 1973 (32)  
*Ischyodus bifurcatus* Case, 1978c (48)  
*Ischyodus williamsae* Case, 1991 (75)  
*Ischyrrhiza basinensis* Case, 1987b (63)  
*Ischyrrhiza georgiensis* Case, Schwimmer, Borodin & Leggett, 2001 (97)  
*Ischyrrhiza monasterica* Case & Cappetta, 1997 (89)  
*Ischyrrhiza* [now *Kiestus*] *texana* Cappetta & Case, 1975b (39)  
*Kiestus* Cappetta & Case, 1999 (93) (type species *Ischyrrhiza texana*)  
\**Kiestus* [was *Ischyrrhiza*] *texanus* (Cappetta & Case), 1975b (39)  
*Lamna* [now *Cretolamna*] *twiggensis* Case, 1981 (97)  
*Lissodus* [now *Lonchidion*] *griffisi* Case, 1987b (63)  
*Lonchidion babulskii* Cappetta and Case, 1975a (38)  
*Lonchidion* [was *Lissodus*] *griffisi* (Case), 1987b (63)  
*Manta* [now *Mobula*] *melanyae* Case, 1980 (55)  
\**Meridania convexa* Case, 1994a (82)  
\**Microcorax crassus* Cappetta & Case, 1975b (39)  
\*"*Microdontaspis*" [now *Carcharias*] *tenuis* Case, Schwimmer, Borodin & Leggett, 2001 (97)  
\**Microscyliorhinus leggetti* Case, 1994a (82)  
\**Misrichthys stromeri* Case & Cappetta, 1990 (71)  
*Mobula* [was *Manta*] *melanyae* (Case), 1980 (55)  
*Mustelus* [now *Gomphogaleus*] *rogersi* Case, 1994a (82)  
*Negaprion* [now *Abdounia*] *furimskyi* Case, 1980 (55)  
*Odontaspis* [was *Hypotodus*] *aculeatus* (Cappetta & Case), 1975a (38)  
*Odontaspis* [now *Cappettaia*] *amonensis* Cappetta & Case, 1975b (39)  
*Odontaspis* [now *Carcharias*] *borodini* Case, 1994a (82)  
*Odontaspis carolinensis* Case & Borodin, 2000 (95)  
*Odontaspis "cheathamii"* [now *Carcharias holmdelensis*] Case, 1987b (63)  
*Odontaspis* [was *Hypotodus*] *grandis* (Case), 1978b (47)  
*Odontaspis* [now *Carcharias*] *hardingi* Cappetta & Case, 1975a (38)  
*Odontaspis* [now *Carcharias*] *holmdelensis* Cappetta & Case, 1975a (38)  
*Odontaspis* [now *Carcharias*] *hynei* Case, 1994a (82)  
*Odontaspis* [now *Carcharias*] *samhammeri* Cappetta & Case, 1975a (38)  
*Odontaspis* [now *Carcharias*] *sanguinei* Case, 1978b (47)  
*Odontaspis saskatchewanensis* Case, Tokaryk & Baird, 1990 (72)  
*Odontaspis* [now *Carcharias*] *steineri* Case, 1987b (63)  
*Odontaspis* [now *Cenocarcharias*] *tenuisplicatus* Cappetta and Case, 1975b (39)  
*Orectolobus ziegenhinei* Cappetta & Case, 2016 (107)  
*Palaeogaleus navarroensis* Case & Cappetta, 1997 (89)  
*Paragaleus* [was *Rhizoprionodon*] *duplinensis* (Case & Borodin), 2000b (95)  
*Paraorthacodus* [was *Synechodus*] *andersoni* (Case), 1978b (47)  
*Paraorthacodus* [was *Hybodus*] *storeri* (Case), 1978b (47)  
*Paraorthacodus* [was *Synechodus*] *striatus* (Case), 1978b (47)  
*Physogaleus americanus* Case, 1994a (82)  
*Physogaleus* [was *Galeorhinus*] *huberensis* (Case), 1981b (57)  
*Physogaleus* [now *Rhizoprionodon*] *rosehillensis* Case & Borodin, 2000b (95)  
*Platyrrhina* [now *Hypolophodon*] *dockeryi* Case, 1994a (82)  
*Plicatolamna* [now *Protolamna*] *borodini* Cappetta & Case, 1975a (38)  
*Plicatoscyllium antiquum* Case & Cappetta, 1997 (89)  
\**Plicatoscyllium derameei* Case & Cappetta, 1997 (89)  
*Plicatoscyllium* [was *Ginglymostoma*] *globidens* (Cappetta and Case), 1975a (38)  
*Pristis pickeringi* Case, 1981b (57)  
\**Promexyle bairdi* Zangerl & Case, 1973 (32)  
*Promexyle peyeri* Zangerl & Case, 1973 (32)  
*Protoginglymostoma* [was *Brachaelurus*] *bighornensis* (Case), 1987b (63)  
[*Protoginglymostoma clementsi* Case & Borodin, in press (106)]

continued next page

Protolamna [was Plicatolamna] borodini (Cappetta & Case, 1975a (38)  
 Protolamna carteri Cappetta & Case, 1999 (93)  
 Protolamna [now Cretodus giganteus] gigantea Case, 2001 (98)  
 Protolamna roanokeensis Cappetta & Case, 1999 (93)  
 \*Protoplathyrhina renae Case, 1978b (47)  
 [Protorhinoptera porhiza Case & Borodin, in press (106)]  
 Pseudocorax granti Cappetta & Case, 1975b (39)  
 \*"Pseudodontaspis" [now Carcharias] herbsti (Case), 1987b (63)  
 "Pseudodontaspis" [now Carcharias] lauderdalensis Case, 1994a (82)  
 Pseudodontaspis [now Brachycarcharias] mississippiensis Case, 1994a (82)  
 Pseudohypolophus Cappetta & Case, 1975b (39) (type species is Hypolophus? mcultyi)  
 Pseudohypolophus ellipsis Case, Schwimmer, Borodin, & Leggett, 2001(97)  
 Pseudohypolophus elongatus Mustafa, Case, & Zalmout, 2002 (100)  
 Ptychotrygon [was Erguitaia] benningensis (Case, Schwimmer, Borodin, & Leggett), 2001 (97)  
 [Ptychotrygon bladenensis Case & Borodin, in press (106)]  
 Ptychotrygon blainensis Case, 1978b (47)  
 Ptychotrygon boothi Case, 1987b (63)  
 Ptychotrygon chattahoocheensis Case, Schwimmer, Borodin, & Leggett, 2001 (97)  
 Ptychotrygon clemensi Case, Cook, Sadorf, & Shannon, 2017 (108)  
 Ptychotrygon cuspidata Cappetta & Case, 1975a (38)  
 Ptychotrygon ellae Case, 1987b (63)  
 Ptychotrygon eutawensis Case, Schwimmer, Borodin, & Leggett, 2001 (97)  
 Ptychotrygon greybullensis Case, 1987b (63)  
 Ptychotrygon [was Erguitaia] rugosa (Case, Schwimmer, Borodin & Leggett), 2001 (97)  
 Ptychotrygon slaughteri Cappetta & Case, 1975b (39)  
 Ptychotrygon winni Case & Cappetta, 1997 (89)  
 Raja farishi Case & Cappetta, 1997 (89)  
 Rhinobatos craddocki Case & Cappetta, 1997 (89)  
 Rhinobatos kiestensis Cappetta & Case, 1999 (93)  
 Rhinobatos ladoniaensis Cappetta & Case, 1999 (93)  
 Rhinobatos lobatus Cappetta & Case, 1999 (93)  
 Rhinobatos uvulatus Case & Cappetta, 1997 (89)  
 Rhizoprionodon [now Paragaleus] duplinensis Case & Borodin, 2000b (95)  
 Rhizoprionodon [was Physogaleus] rosehillensis (Case & Borodin), 2000b (95)  
 Rhombodus levis Cappetta & Case, 1975a (38)  
 Sclerorhynchus fanninensis Cappetta & Case, 1999 (93)  
 Sclerorhynchus pettersi Case & Cappetta, 1997 (89)  
 Sclerorhynchus priscus Cappetta & Case, 1999 (93)  
 Scoliodon conecuhensis Cappetta & Case, 2016 (107)  
 Scyliorhinus arlingtonensis Cappetta and Case, 1999 (93)  
 Scyliorhinus ivagranta Case & Cappetta, 1997 (89)  
 Scyliorhinus taylorensis Cappetta & Case, 1999 (93)  
 Scyliorhinus tensleepensis Case, 1987b (63)

\*Sibyrhynchus denisoni Zangerl & Case, 1973 (32)  
 Squalus huntensis Case & Cappetta, 1997 (89)  
 Squalus [was Centrophoroides] worlandensis (Case), 1987b (63)  
 Squatigaleus sulphurens Case & Cappetta, 1997 (89)  
 Squatirina [now Columbusia] roessingi Case, 1987b (63)  
 Synechodus [now Parorthacodus] andersoni Case, 1978b (47)  
 Synechodus [now Paraorthacodus] striatus Case, 1978b (47)  
 Synechodus turneri Case, 1987b (63)  
 Synodontaspis [now Carcharias] lilliae Case, Tokaryk & Baird, 1990 (72)  
 \*Tallahattaophis dunni Holman & Case, 1988 (67)  
 \*Tethylamna dunni Cappetta & Case, 2016 (107)  
 \*Texabatis corrugata Case & Cappetta, 1997 (89)  
 Textatrygon copei Cappetta & Case, 1999 (93) (type sp. is Ptychotrygon hooveri)  
 Tomewingia [was Ewingia] problematica (Case & Cappetta), 1997 (89). (105)  
 Genus preoccupied by mite.  
 \*Tuscahomaophis leggetti Holman & Case, 1992 (79)  
 \*Vipereucullus kuehnei Case, 1996 (87)

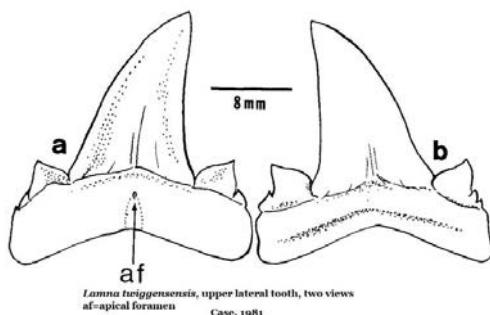
Numbers of Taxa Named by Case and Associates

- 8 - number of genera named by Case alone
- 10 - number of genera named with Case as senior author
- 14 - number of genera named with Case as junior author
- 32 - total genera
- 57 - number of species named by Case alone
- 48 - number of species named with Case as senior author
- 45 - number of species named with Case as junior author
- 150 - total species
- 181 - total genera and species

Thanks to Earl Manning for compiling and sharing this list



Jerry Case at one of our Fossil Fairs



Left: one of Jerry's drawings of *Lamna twiggensis* from a publication. Right: photo of some of Jerry's teeth (*Lamna twiggensis*) from Egypt and Georgia. This species has been placed in many genera, more recently *Tethylamna*.

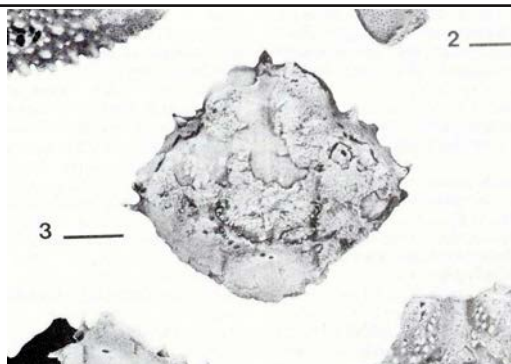
**Becky Hyne**  
**March 22, 1936 - February 12, 2021**



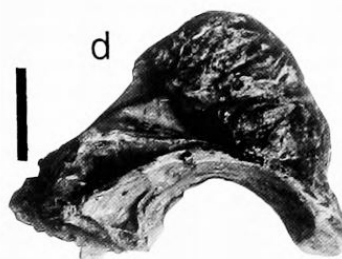
With great sadness, we wanted to let you know that Becky Hyne passed away, in her sleep, on the morning of February 12, 2021. She had been living with her great niece and family in Alabama for a while and was very happy living there. The niece and her husband have a young daughter (early elementary school age) and Becky truly enjoyed being around her and I think the feeling was mutual for the young girl. The family all went fossil collecting together a couple of times when Becky was able and I'm sure she enjoyed those times. We are so thankful that Becky was in a loving, family setting during the last part of her life.

Becky was a longtime friend of DVPS, facilitating many collecting trips to both Lee Creek Mine in North Carolina and the Badlands of Nebraska. She served as our almost "personal DVPS bus driver" into the mine and always invited us back to her home to visit with her and husband Frank, tell stories and talk fossils. She was a perennial participant in Fossil Fair, in person in the early days and through her always generous donations of fossils to both the sales table and our sandbox.

Currently, no funeral arrangements have been made. We will advise if we learn anything about those. We all enjoyed knowing Becky and spending time with her. We will always have loving memories of Becky and the special times we spent with her forever.



***Ameridromia hyneorum*- Eocene crab named for Becky and Frank Hyne**



***Pagurus hyneus*- Pliocene fish skull named for Becky and Frank Hyne**

-----  
**Submitted by Cindy Crane**

*Sometimes, people come into your life for a moment, a day, or a lifetime. It matters not the time they spend with you but how they impacted your life in that time. - Unknown*

The Aurora Fossil Museum is greatly saddened to hear of the passing of an Aurora Titan, Mrs. Becky Hyne. Those who knew Becky will remember her kind disposition and her infectious passion to educate about the natural history of the Aurora (Lee Creek), North Carolina location. Specimens collected by Becky grace the halls and fill the collections of many institutions including the Aurora Fossil Museum, the North Carolina Museum of Natural Sciences, and the Smithsonian National Museum of Natural History. The scientific world is more knowledgeable because of her dedication and generosity.

Locally, Becky's dedication to paleontology was most appreciated as a leader (the bus driver) for the countless collecting trips into the Aurora phosphate mine (Currently Nutrien, formally PotashCorp, PCS, Texas Gulf, etc.). Fossil enthusiasts would travel from around the world for the opportunity to collect the famous Lee Creek site. Becky would always happily greet friends and welcome strangers-turned into friends to Aurora. Personally, as a fossil guide (aka a white hat), I was very fortunate to

*continued next page*

interact with Becky on various collecting trips into the Aurora phosphate mine. No matter how the day turned out, Becky would always have a smile on her face. Her approachable demeanor allowed trip participants to learn from Becky first-hand about the fossils they discovered. Becky was a one-of-a-kind person. I will cherish the many fond memories I have of her.

Cynthia (Cindy) Crane, Executive Director  
Paleontologist, Geologist  
Aurora Fossil Museum Foundation, Inc.  
Aurora, North Carolina

-----  
**Submitted by Dave Bohaska, National Museum of Natural History**

It's hard to remember when I first met Becky Hyne. I think she and Frank were along on a joint Calvert Marine Museum (CMM) Fossil Club/NCFC trip to Calvert Cliffs, when I still worked and lived next door to the CMM. That should make it 1984 or earlier.

Always interesting to watch people first try to pronounce "Hyne" correctly. Her husband Frank once said what a disservice he did marrying her.

A stop at Becky and Frank's home (various locations over the years) was standard during our fossil fair and field trips, usually in the fall. There was always a box of fossils for us to take back. (At best we got down to Lee Creek once or twice per year; it has always been the locals going in frequently who found the most interesting fossils. "Amateurs" homes have always been the best fossil localities).

Our visits usually included a home cooked meal. I think we used our per diem once to bring Chinese food. Dale Earnhardt plates and posters were on the walls; Becky was a fan. She also collected McDonalds Happy Meals toys. (I wonder what happened to the original Andy Capp cartoon in the bathroom: Flo: "What do you call a man who's always deceiving his wife." Andy: "A genius?")

Becky was long an escort for visitors to Lee Creek Mine. She made us obey the rules (nicely) just like anyone else.

One of my better moments was when Becky was brought to a NC Fossil Fair in Raleigh, and she remembered my name and gave me a hug, despite her dementia. An even better moment was the next time I saw her. She had been moved out of a nursing home and taken off drugs she didn't need, and was herself again.

It's hard to remotely research Becky's contributions to the Smithsonian Institution. For starters, I entered "Hyne" as collector in our catalogue and got 1748 hits. Most are Frank and Becky as joint donors, a few are Frank only (Frank's brother also gave us a few things), others Becky only. There may be a few duplicates (specimens may be reentered when used in a publication). But these are far exceeded by the "lot numbers". For example, one batch of 80 turtle shell fragments received only one number.

Working through Lee Creek specimens, I saw fossil wood, sea urchins, sharks, rays, bony fish, turtles, crocodiles, birds, dolphins, whales, seals, walruses, a dugong, and land mammals. As I went down the list, I was astounded by the numbers of some very rare animals. Was it possible she gave us that large a percentage of the specimens of that species in our collection; there are certainly other major donors? We always accepted every seal and bird bone, but 19 walrus; how many more are known from Lee Creek? Three Megachasma (megamouth shark); aren't there only six? Side necked turtle (1 of 3), great auk (5), false toothed bird (5), condor (1 of 3), stork (2 of 3), brant (1 of 3), large snipe (the only one from Lee Creek), grebe (3 of 20), common goldeneye (1 of 7), harlequin duck (2). Land mammals (10), most of them mentioned or illustrated in Lee Creek IV.

Becky visited other localities of course. A quarry in Rose Hill, NC, yielded a Pleistocene horse and an Eocene snake. She gave us a large collection from the classic Phoebus Landing Cretaceous locality, a dinosaur (and other vertebrates) site going back to the time of E. D. Cope.

I see one mustelid from Nebraska. Becky liked to go out west to collect terrestrial mammals and turtles. Many of these were guided trips; some years she served as cook to cover expenses.



**Dave Bohaska, Becky Hyne and Bob Purdy at the Aurora Fossil Festival**  
photo by Trish Kohler

**Tom Burns**  
**February 8, 1953 - January 2, 2021**



Reprinted from- <https://www.bridgescameronfuneralhome.com/obituary/Thomas-Burns>

On Saturday, January 2nd, 2021, Thomas Edward Burns, loving husband and father/grandfather, passed away at the age of 67.

Tom was born February 8th, 1953, in Springfield, MA to James and Ruth Katherine Burns and grew up in Jacksonville, FL, before moving to Sanford, NC at age 11. He worked as an independent contractor and ran his painting and industrial contracting business for almost 30 years in the Triangle area. On May 23, 1976, he married the love of his life, Pamela Perry Burns, and together they raised two sons, Adam and Mark.

Tom was an avid paleontologist with a love for fossil hunting throughout his life and was both a member and President of the NC Fossil Club. He led country-wide fossil collecting trips and helped spark the revival of paleontological interest in NC in the 1980s, and many of Tom and Pam's discoveries have been donated and displayed at the NC Museum of Natural Sciences and the Smithsonian. He also had a passion for learning and discovery: from Heinlein to Gibbon, the Bible to the Quran, and philosophy to poetry, Tom searched for knowledge and understanding of the world around him and loved sharing it with everyone he could. As a Scoutmaster for the Boy Scouts of America, he led field trips and interactive studies that fueled the imaginations and passions of several children, especially his sons.

Since childhood and later into his life, Tom was especially enthusiastic about coin collecting, particularly rare U.S. mints and ancient Roman coins, and would frequently attend local coin shows looking for those special finds. His greatest joy, however, came from spending quality time with his grandchildren and teaching them all about fossils and history.

Tom is preceded in death by his father and mother, James and Ruth Katherine, and his brother Barry.

He is survived by his wife Pamela, his sons Adam (and fiancé Heather) and Mark (and wife Alicia), his grandchildren Eva, Ian, Ellie and Henry, his brother David, his stepmother Bonnie Gail, and several cousins, nieces and nephews.



**Tom Burns talking with  
Richard Chandler at the  
Fossil Festival.**

**Photo by Trish Kohler.**

# Fossils, Dinosaurs and Paleontologists



2nd Grade Presentation

## Doing Outreach During the Pandemic

Terry Anne Denny

In fall of 2019 going into early 2020 I had the opportunity to present some 2nd grade fossil talks to a number of schools for their fossil unit. I was looking forward to visiting these schools again. Once Covid struck, over time it became apparent that this would not be possible this school year, so I began to work on turning my talk into a virtual presentation. Getting out my camera, I photographed everything I would have shown in person. I then made short videos of some experiments I had usually done with the students, showing how minerals get into water, and how those minerals could soak into bone. I found out that Wake County required the use of Google Meet, so I converted my Powerpoint into Google Slides, asked a colleague from my old school to help me practice, and I worked out the kinks in the technology to accomplish what I wanted to do. We found out that 2 devices would be needed to be able to talk and show videos in the same presentation on Google Meet, so my husband became my technical assistant! When everything was working smoothly, I contacted each of the schools and offered a “Virtual Field Trip” to their students. The teachers were so happy to be able to include this in the unit, as this year was so restricted for everyone. Over 3 months I made 9 second grade presentations for 6 schools and one STEM Night for K-5th grades, and each session ended with discussion and questions. Some classes sent me additional follow-up questions via e-mail, and virtual thank you notes, as well! Once it was all organized, it was easy to repeat. While it is not the same as being there live, it is still a lot of fun and very rewarding for everyone involved. Now I am working on a 4th grade presentation so we can start round 2!

**My Favorite Part of the field trip was...**

- Notes from Mrs. Calloway's class: thank you for coming we enjoyed your visit I love your fossils. sincerely jax
- when you showed us the dinosaur teeth. thank you for showing us fossils.
- Thank you for showing us your fossils!
- was when you showed us the megalodon tooth picture
- my favorite part of the field trip was learning about fossils and I love the fossils and thank for teaching us
- thanks that you showed the fossils!
- when you showed us the alligator.
- I love all the fossils you showed us
- thas 4 show flossls
- i love flossls

**My Favorite Part of the field trip was...**

- Notes from Mrs. Steiner class: Seeing all the cool fossils that were found - Mrs. Stevens
- seeing the megalodon tooth ben
- My favorite part was the experiment London
- I got to see a dino cracudil. Michelle
- seeing those cool video Langston
- lalney my favorite part was seeing the three tooth from a shark.
- Seeing the tooth of a triceratops- Minh
- seeing a tooth Carlie
- Seeing where to dig like by the river bank -Cameron
- the experiment also ben

**My favorite part of the presentation was...**

- My favorite part was seeing the fossils. That was so cool, especially the shark tooth.
- All of the fossils were amazing! Thank you for sharing all the information with us.
- My favorite part was learning about that new shark tooth.
- I liked seeing some different experiments we can try at home.
- My favorite part was seeing and learning about all the fossils.
- Hearing about how Ms. Denny found the fossils.

**My Favorite part of the Field Trip was...**

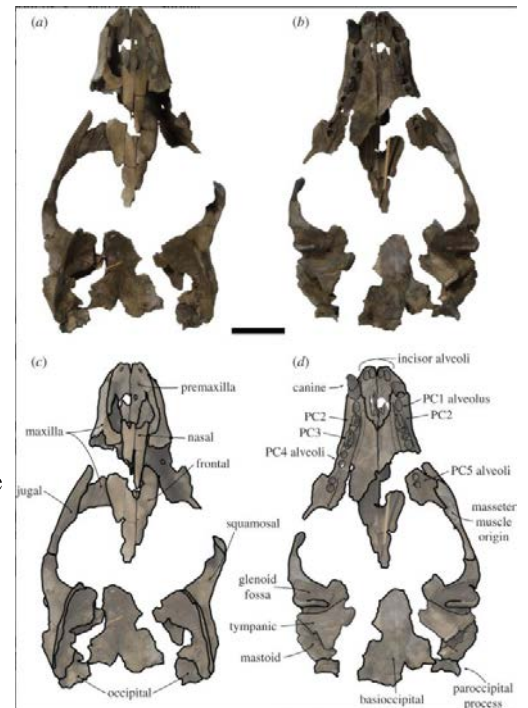
- meeting a real paleontoligist devin.
- seeing shark teeth by kamryn
- Seeing Ms Denny, and that she found a new kind of specie
- I learned about new dinosaurs
- seeing alot of fossils
- when the paleontologist showed a shark tooth

## Some fossil discoveries from North Carolina published in 2020

Rule JP, Adams JW, Rovinsky DS, Hocking DP, Evans AR, Fitzgerald EMG. 2020. **A new large-bodied Pliocene seal with unusual cutting teeth.** Royal Society Open Science 7: 201591.

[A new taxon is described based on fossils collected from the Lee Creek Mine.](#)

**Abstract:** Today, monachine seals display the largest body sizes in pinnipeds. However, the evolution of larger body sizes has been difficult to assess due to the murky taxonomic status of fossil seals, including fossils referred to *Callophoca obscura*, a species thought to be present on both sides of the North Atlantic during the Neogene. Several studies have recently called into question the taxonomic validity of these fossils, especially those from the USA, as the fragmentary lectotype specimen from Belgium is of dubious diagnostic value. We find that the lectotype isolated humerus of *C. obscura* is too uninformative; thus, we designate *C. obscura* as a nomen dubium. More complete cranial and postcranial specimens from the Pliocene Yorktown Formation are described as a new taxon, *Sarcodectes magnus*. The cranial specimens display adaptations towards an enhanced ability to cut or chew prey that are unique within Phocidae, and estimates indicate *S. magnus* to be around 2.83 m in length. A parsimony phylogenetic analysis found *S. magnus* is a crown monachine. An ancestral state estimation of body length indicates that monachines did not have a remarkable size increase until the evolution of the lobodontins and miroungins.



Fossil found at Belgrade Quarry

**Abstract:** Miocene terrestrial mammals are poorly known from the Atlantic Coastal Plain. Fossils of the Order Carnivora from this time and region are especially rare. We describe a carnivoran mandible with a p4 from the late Oligocene or early early Miocene Belgrade Formation in Jones County, North Carolina. Comparisons are made with carnivoran jaws with similar premolar and molar lengths from the late Oligocene and Miocene of North America and Eurasia. These indicate that the North Carolina jaw is assignable to the Ailuridae, a family whose only living member is the red panda. The jaw is tentatively referred to *Amphictis*, a genus known elsewhere from the late Oligocene and early Miocene of Europe and the early Miocene (Hemingfordian) of North America.

The North Carolina mandible compares best with the late Oligocene (MP 28) *Amphictis ambiguus* from Pech du Fraysse, France, the oldest known member of the Family Ailuridae, and with the early Miocene (MN 1–MN 2a) *A. schlosseri* from southwestern Germany. This identification is compatible with a late late Arikareean (Ar4, early Miocene, MN 2-3 equivalent) age assignment for the other terrestrial mammals of the Belgrade Formation.

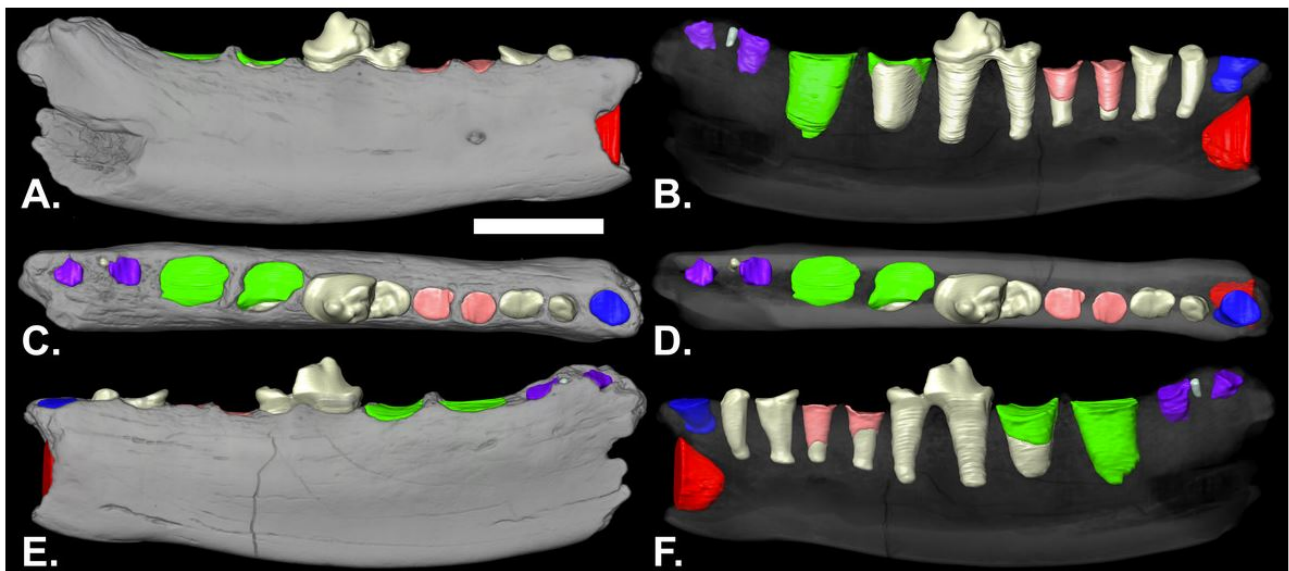
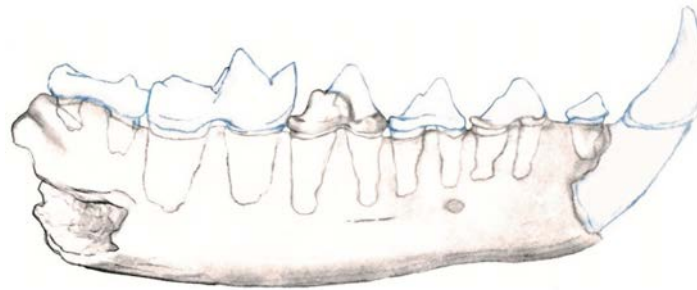
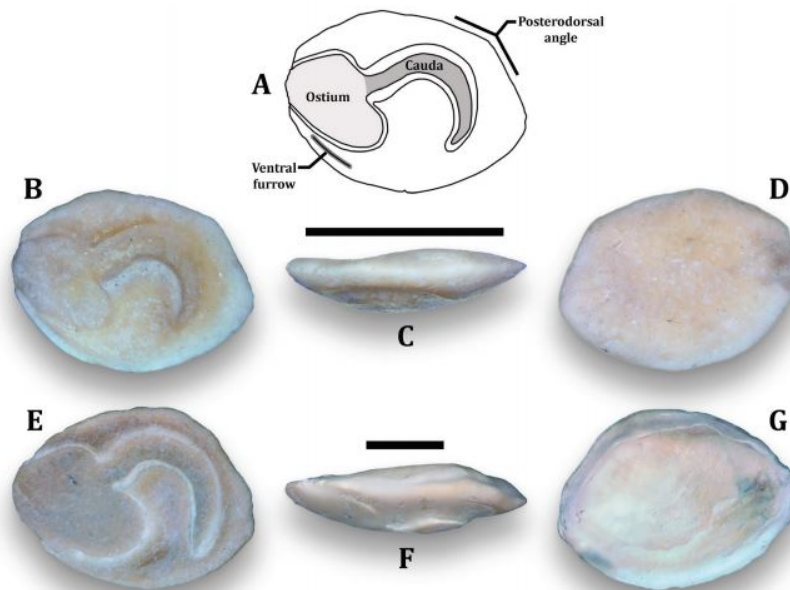


Figure 1: Lateral (A & B), occlusal (C & D) and medial (E & F) views of volumetric reconstruction of NCSM 33670.

Stringer, G.L., J.A. Ebersole, and S.M. Ebersole. 2020. **First description of the fossil otolith-based sciaenid, *Equetulus silverdalensis* n. comb., in the Gulf Coastal Plain, USA, with comments on the enigmatic distribution of the species.** *PaleoBios*, 37. ucmp\_paleobios\_49670.

[This article is about Gulf Coast occurrence of \*Equetulus silverdalensis\* but includes comparison otoliths from the Belgrade Formation in North Carolina](#)

**Abstract:** The fossil otolith-based sciaenid genus *Equetulus* is known almost exclusively from South America, the Caribbean, and Central America, with the various species ranging in age from the late Oligocene to late Miocene. The only exception to this geographical distribution is the isolated occurrence of *Equetulus silverdalensis* n. comb. in the Belgrade Formation (latest Oligocene–early Miocene) in the Atlantic Coastal Plain of the USA (North Carolina) and a mention of its occurrence in the Chickasawhay Limestone (late Oligocene) in the Gulf Coastal Plain of the USA (Mississippi). However, sampling of the Paynes Hammock Sand (late Oligocene, Chattian) near Millry, Alabama, USA, resulted in the discovery of an otolith representing the first occurrence of *E. silverdalensis* in Alabama and the first systematic description of the species from the Gulf Coastal Plain of the USA. These occurrences suggest a potential distribution of this fossil species from Atlantic Coastal Plain of North Carolina to the central Gulf Coastal Plain of Alabama and possibly Mississippi.



**Figure 4.** A–G. Otoliths of a presumed juvenile *Equetulus silverdalensis* n. comb. from Alabama and an adult from North Carolina. A–D. Right sagitta of juvenile MSC 42698 from the Paynes Hammock Sand (late Oligocene, Chattian), Millry locality, Washington County, Alabama, USA. Illustrative drawing of the inner face (A) of MSC 42698 (B). C. Dorsal view. D. Outer face. E–G. Right sagitta of adult MSC 42699 from the Belgrade Formation (late Oligocene to early Miocene), Silverdale, North Carolina, USA. E. Inner face. F. Dorsal view. G. Outer face. Scale bars=2mm.

Harry M. Maisch IV, Martin A. Becker & John A. Chamberlain Jr. (2019): **Macroborings in *Otodus megalodon* and *Otodus chubutensis* shark teeth from the submerged shelf of Onslow Bay, North Carolina, USA: implications for processes of lag deposit formation.** *Ichnos*

[This came out late 2019. It didn't make it into last year's Janus.](#)

**Abstract:** The shallow continental shelf in the Cape Fear Region of southwestern Onslow Bay, North Carolina, contains lag deposits with an abundance of megatoothed shark teeth belonging to *Otodus megalodon* (Agassiz 1835) and *Otodus chubutensis* (Ameghino 1906) that derive from the Pliocene Yorktown and Miocene Pungo River formations, respectively. These teeth exhibit different frequencies and orientations of macroborings identified as *Gastrochaenolites torpedo* Kelly and Bromley (1984), *Gastrochaenolites lapidicus* Kelly and Bromley (1984), *Maeandropolydora sulcans* Voigt (1965) and ?*Entobia* isp. attributed to endolithic bivalves, serpulid worms and clionaid sponges. Different frequencies and orientations of macroborings seen in lag deposits containing *O. megalodon* and *O. chubutensis* teeth are the result of repeated exhumation and reworking in response to bathymetrically controlled wave-based erosion during storm events and glacioeustatically driven sea-level cyclicity across Onslow Bay. Chronological ranges of *O. megalodon* and *O. chubutensis* teeth that contain macroborings indicate that these lag deposits may have been forming since the late early Miocene.

*continued next page*



Figure 5. *Gastrochaenolites torpedo* in *O. megalodon* teeth from Onslow Bay. Note the occurrence of secondary borings within larger borings (A, D); borings at various orientations (B, D,E); borings on both lingual and labial tooth surfaces (E-G); and truncated borings (H, J). *Lithophaga antillarum* valve (I) recovered from Onslow Bay and interpreted as a likely tracemaker of *G. torpedo*. Teeth in: A (ANSP: VP24171), B (Private collection of B. Major), D-H, J (ANSP: VP24163; 2417-24174) =shallower lag deposit locality; C (ANSP: VP24164) =intermediate lag deposit locality. Tooth orientations: A, B, D, E, H, J = lingual; C, F, G = labial. Scale bars: A, D, E, F, H, J = 2 cm; B, I = 5 cm; C, G = 1 cm.

Davis, D.J., Garassino, A., and Weaver, P.G. **Matutites collinsi n. sp. (Crustacea, Decapoda, Matutidae) from the Spring Garden Member of the Castle Hayne Formation in North Carolina (USA).**

May 2020 Neues Jahrbuch für Geologie und Paläontologie - Abhandlungen 296(1):67-71

Found at the Clarks Quarry during an NC Fossil Club trip

**Abstract:** Here we report *Matutites collinsi* n. sp. (Crustacea, Decapoda, Matutidae) from the upper-most Middle Eocene Spring Garden Member of the Castle Hayne Formation of North Carolina. This record demonstrates once again that the genus *Matutites* Blow & Manning, 1996 is restricted to the southeastern USA and currently known exclusively from Lower Paleocene to Middle Eocene strata.

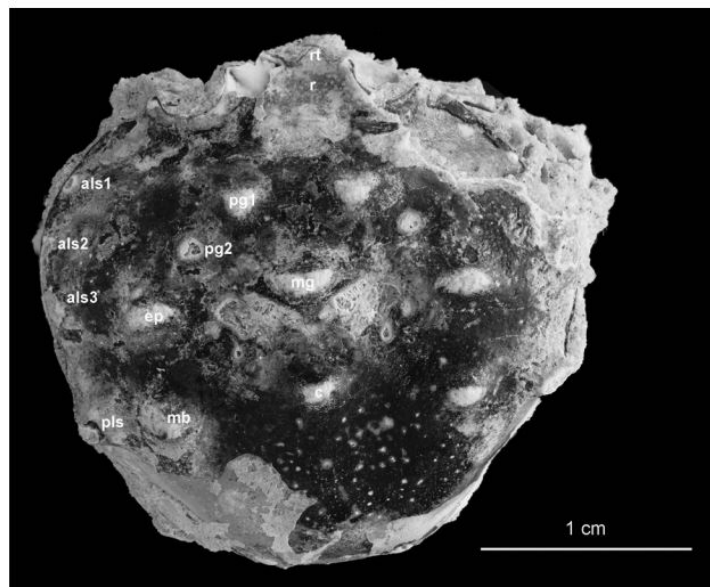


Fig. 2. *Matutites collinsi* n. sp., holotype (NCSM 12603); general view of dorsal carapace surface. Abbreviations: als1, 2, 3: anterolateral spines 1, 2, 3; c: cardiac spine; ep: epibranchial spine; mb: mesobranchial spine; mg: metagastric spine; pg1, 2: protogastric spines 1, 2; pls: posterolateral spine; r: rostrum; rt: rostral tip.

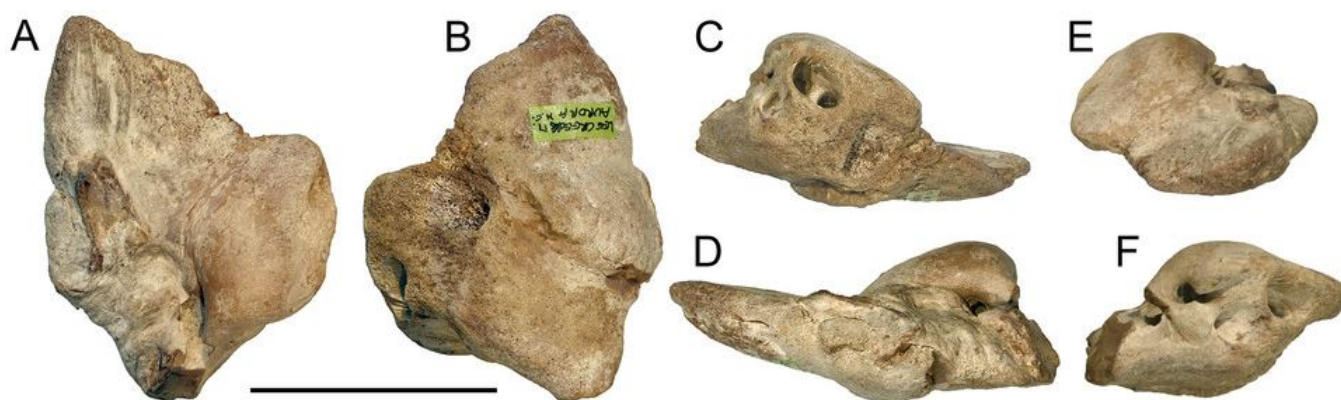
Two of the several fossils in this paper were found in North Carolina

**Abstract: Background:** An extensive radiation can be inferred among balaenopterid mysticetes in the last 10 million years based on a rich fossil record. Many extinct genera and species have been established in the past by the study of fossil rorquals from northern and southern hemispheres. In many cases, the new fossils are used to create new genera. However, in very recent times, new species of known genera have been described that help our understanding of the speciation processes and the biogeography of these whales. Here, a new species of balaenopterid whales is described in order to better understand the past diversity of Balaenopteridae and to analyze its paleobiogeographical implications. As the new species closely resembles a taxon established in the 19th century (i.e., Burtinopsis), a detailed analysis of this taxon was necessary to support the new taxonomic statements of this article.

**Methods:** A new partial skeleton including skull and earbone is described and compared to an extended sample of living and fossil mysticete species. A phylogenetic analysis including 355 character states scored in 88 taxa was performed to understand its relationships within the genus Protororqualus, to allow paleobiogeographic inferences and to better understand the relationships of Protororqualus within Balaenopteridae. Maximum parsimony analyses of character evolution were performed to understand morphological transformations within

Balaenopteridae. The revision of Burtinopsis was carried out based on detailed descriptions and comparisons of the type materials that were figured and measured.

**Results:** Protororqualus wilfriedneesi sp. nov. was established based on a comparative analysis of the skull and earbone morphology. The specimen is dated back to the Zanclean (Lower Pliocene, between c. 5.3 and 3.6 Ma). A taphonomical study of the holotype skeleton revealed evidence of interactions with sharks and fishes before the definitive burial of the carcass. Based on the phylogenetic analysis, the monophyly of the genus Protororqualus was confirmed. Protororqualus wilfriedneesi sp. nov. was more derived than Protororqualus cuvieri suggesting that it resulted from an invasion of the North Sea Basin (and the North Atlantic ocean) from the Mediterranean basin. Several specimens from western and eastern sides of the Atlantic Ocean are described that suggest that Protororqualus wilfriedneesi had a trans-Atlantic distribution in the Pliocene.



*Protororqualus wilfriedneesi* periotic found at Lee Creek.

## 2021 Membership Application - North Carolina Fossil Club



Name (1) \_\_\_\_\_ email \_\_\_\_\_

(Primary adult member -18 or older for Single/HH Membership)

Name (2) \_\_\_\_\_ email \_\_\_\_\_

(Secondary adult member - 18 or older for HH Memberships)

Address \_\_\_\_\_

City, State, ZIP \_\_\_\_\_

Phone (\_\_\_\_) \_\_\_\_\_ - \_\_\_\_\_

First names of minor (<18) children: \_\_\_\_\_

\*\*\*Current members need to only complete name, any changes and sign the Liability Statement.\*\*\*

Select **One** Type of Membership

(Enclose check or money order

for the indicated amount.)

Individual (new) \$20.00

Individual (renewal) \$15.00

Household (new) \$25.00

Household (renewal) \$20.00

Children of NCFC members who are dependent minors (<18) and living at home may accompany parents on any trip *except those with specific age restrictions*.

Memberships are effective from January through December of the year (or portion of the year) of the date of application. For example, persons joining in August will need to renew their membership 5 months later in January.

The Fossil Club's newsletter, JANUS, is published four times a year and is available only online for members. You may read it online or download it from the website

### NCFC Liability Statement

The Undersigned hereby acknowledges his/her understanding that fossil collecting is an inherently dangerous activity which can result in serious bodily injury or death, and/or property damage and hereby confirms his/her voluntary assumption of the risk of such injury, death or damage.

The Undersigned, in return for the privilege of attending field trips related to the collection of and/or study of fossils, or any other event or activity conducted or hosted by the North Carolina Fossil Club (NCFC), hereinafter collectively and individually referred to as "NCFC Events", hereby releases the NCFC, NCFC Members of the Board, NCFC Event leaders or organizers and hosts, landowners and mine or quarry operators from any and all liability claims resulting from injury to or death of the undersigned or his/her minor children or damage to his/her property resulting from any cause whatsoever related to participation in NCFC Events.

The Undersigned agrees to comply with any and all rules and restrictions which may be communicated to the undersigned by the NCFC Event leader and/or landowner and mine or quarry operator and acknowledges that failure to comply will result in immediate expulsion from the premises.

The Undersigned acknowledges that this release covers all NCFC Events and will remain in effect at all times unless or until it is revoked by written notice to the current President of the NCFC and receipt of such revocation is acknowledged.

The Undersigned further attests to his/her intent to be legally bound by affixing his/her signature to this release.

Name \_\_\_\_\_ Signature \_\_\_\_\_ Date \_\_\_\_\_

Name \_\_\_\_\_ Signature \_\_\_\_\_ Date \_\_\_\_\_

**Privacy Policy:** The NCFC collects contact information for purposes of contacting you regarding your membership, collecting trips you may have signed up for and for other members who may wish to contact you. Your contact information is also included on a membership list published on a secure location on the NCFC website and is available to other current NCFC members. If you do not wish for your contact information to be included on the published membership list, please send an email to [membership@ncfossilclub.org](mailto:membership@ncfossilclub.org) with "membership list opt out" in the subject line. Please note while you will continue to receive information (electronic and paper) from the club; other members, including trip leaders may not have access to your contact information.

**Mail To:** North Carolina Fossil Club, P.O. Box 25276, Raleigh, NC 27611

## **NORTH CAROLINA FOSSIL CLUB, INC.**

**(Founded 1977)**

### **Members of the Board**

<b>PRESIDENT</b>	Ramona Krailler	(804) 704-9657	Durham, NC
<b>VICE PRESIDENT</b>	Linda McCall	(512) 422-2322	Reidsville, NC
<b>IMMEDIATE PAST PRESIDENT</b>	Diane Willis	(919) 967-1008	Chapel Hill, NC
<b>TREASURER</b>	David Sanderson	(919) 469-2812	Cary, NC
<b>SECRETARY</b>	Terry Denny	(919) 779-9499	Garner, NC
<b>MEMBERSHIP CHAIR/WEBMASTER</b>	Mike Bruff	(984) 212-6232	Clayton, NC
<b>EDITOR, <i>JANUS</i></b>	Eric Sadorf	(919) 466-8484	Cary, NC
<b>OTHER BOARD DIRECTORS</b>	Cheryl Gourley (2022)		Wake Forest, NC
	Trish Kohler (2021)	(919) 383-6328	Durham, NC
	Gary Lewis (2021)	(919) 651-0904	Cary, NC
	James Mickle (2022)	(919) 677-8316	Cary, NC
	Lynn Moore (2022)	(336) 782-5167	Ocean Isle Beach, NC
	Don Rideout (2021)	(252) 474-6222	Trenton, NC
	Travis Seymour (2022)	(253) 521-0282	Raleigh, NC
	Rick Trone (2021)	(919) 538-8184	Greenville, NC
<b>GENERAL CONTACT</b>	paleoNC@ncfossilclub.org		

## **NORTH CAROLINA FOSSIL CLUB**

### **CODE OF ETHICS AND CONDUCT**

1. Please conduct yourselves in a manner that best represents the NCFC.
2. Please make a sincere effort to keep informed of all laws, regulations and rules regarding collecting on private and public lands.
3. Never use the name of the Club to gain access to lands, or scientific sites actively under study by paleontological professionals for personal gain or profit.
4. Please act responsibly and safely on all club outings so as not to bring other members or yourself into harm or danger. Parents are responsible for their children and making sure their children follow all quarry, etc. rules. Firearms are prohibited from all Club functions.
5. Always respect and cooperate with the field trip leader or designated authorities in collecting areas. Do not bring along anyone not signed up for the trip, or any non-member to a trip without clearing it with the field-trip leader first.
6. Never collect a site immediately prior to a scheduled field trip thereby preventing fair collecting opportunities for the rest of the members of the Club. "Scouting" ahead of time by the field trip leader is fine.
7. You are encouraged to contact the appropriate professionals upon discovery of what you consider to be scientifically significant fossils. This includes excavation, preparation, and documentation of the fossils in question. You are encouraged to consider donating such fossils to appropriate facilities.